

Welcome to our virtual taster event -

BA (Hons) Primary Education with QTS

University of Worcester

We'll start the talk at 5:15pm.

You'll be on mute for the duration of the presentation but you can add comments to the chat box throughout the presentation.

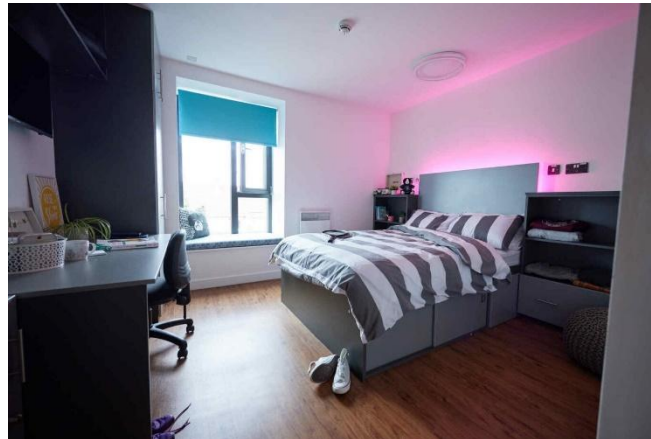
We recommend grabbing a notebook and a pen to jot anything down too!

About the University



Home from home

- Over 1,000 rooms on campus
- Guaranteed accommodation for first-years
- All bills and gym membership included
- Student parking permits available to park on campus
- Take a tour of the accommodation today



Excellent employability

- 96.5% graduate employment (Graduate Outcomes Survey 2023)
- First in the UK for graduate employment (LEO 2024)
- First for Quality Education (Times Higher Education's University Impact Rankings 2024)



Finance support and advice

- Finance colleagues can help you manage your money and give advice on the support packages available for University, such as the Student Loan
- Academic Scholarship Awards granted each year for high-achieving first-year and second-year students
- Access to Learning fund available



Ofsted 2023 Outstanding provider

The University of Worcester's education of future primary and secondary teachers has been given the highest possible grade of Outstanding by Ofsted.

Inspectors commented: "The ITE (Initial Teacher Education) primary partnership is a learning community that places children at the heart of everyone's endeavours."

The inspection result makes Worcester the only university in the West Midlands – and only the second in the Country - whose primary and secondary teacher training programmes have been rated Outstanding post pandemic.

Inspectors conclude: "By the end of their experience at Worcester University, trainees are exceptionally well prepared to enter the teaching profession."



112 UCAS
points

Primary Education (with QTS) BA (Hons) (Early Years 3-7 years or Later Years 5-11 years)

Interview

Year 1

Professional Practice
Teachers as Researchers
Developing Self
Curriculum Studies

2 week block placement
+
6 week block placement
Formative assessment

Year 2

Professional Practice
Teachers as Researchers
(Contemporary issues)
Developing Self & Experiences
Curriculum Studies

2 week placement
+
6 week block placement
(SEND optional 1 week placement)
Formative assessment

Year 3

Professional Practice
Dissertation
Developing Self, Experiences &
Practice
Curriculum Studies

8 week block placement
+
Time for research
Summative assessment against
the Teachers' standards at the
end of placement (QTS)

6 strands run throughout the 3 years

Year One



Professional Practice

- Initial Teacher Training Early Career Framework (ITTECF)
- Introduction to inclusion and diversity
- Consideration of class-based practice
- Peer observation skills and professional dialogue
- Professionalism
- School Experience

Teachers as researchers

- The child as a learner: theoretical and practical perspectives
- Child Development
- Play, growth and learning
- The principle philosophies that have impacted on education
- National Curriculum
- Educational Philosophy
- An introduction to primary research

Developing self

- Mental health and well-being
- Work/life balance and taking the initiative to achieve greater well-being
- Personal Values and professional values; bringing professional identity components together
- Reflection on self and professional development through target setting

Teaching and Learning: Core subjects

- Maths, English, Science, PE
- Subject knowledge
- Pedagogies
- Policies and frameworks
- Key curriculum models eg planning, creativity.

Teaching and Learning: Foundation subjects

- Introduction to all foundation subjects
- Subject knowledge
- Pedagogies
- Policies and frameworks

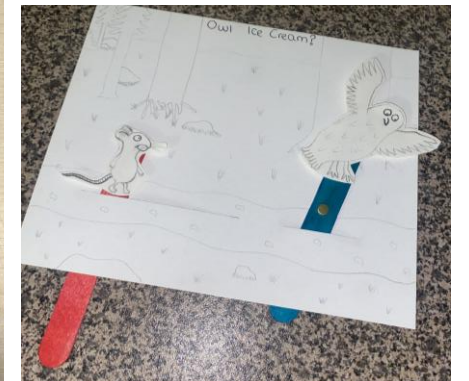
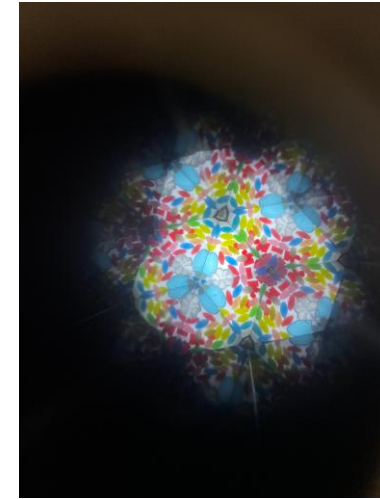
School Experience

Intensive Training and Practice (ITaP)

From 2024/25, Intensive Training and Practice (ITaP) will be integrated within the course programme. ITaP allows trainees to explore granular aspects of the core content framework and focus on key skills that they will need to be effective teachers. You will be taught about the ITaP focus area, explore what this looks like in practice, engage in deliberate practice at university, before exploring the concept in school and engaging in deliberate practice within the school environment. Your knowledge and skills will be reviewed at the start and end of the ITaP process to measure the development in your understanding.

Timetable

Lectures



Placements



Visit us at an Open Day

Upcoming Open Days

- Saturday 25th October
- Saturday 29th November

Book your place on our website at
worchester.ac.uk/opendays



At our Open Days you can:

- Come and chat to the team, including our Primary Education students
- Speak to our Finance, Disability & Dyslexia and Admissions teams
- Book an appointment about writing your Personal Statement
- Take a campus tour to see our facilities
- Look around our on-campus accommodation

We want
trainees
who are:

passionate about teaching;

confident and **reflective**;

effective communicators who can work in **partnership**;

informed intellectuals who promote a **love of learning**;

can demonstrate a **good standard** of spoken and written **English**

resilient individuals who able to demonstrate **high standards of personal conduct**.

aware of the **roles** of a teacher

The Application Process



- For UNDERGRADUATE (Degree) teaching courses you should apply through UCAS.
- Use all of the support available to ensure your application is the best it can be!
- You will be asked to give a reference from someone, this is usually a current college teacher/tutor.
- Be patient when waiting for communications from the university you have applied to.

Writing your personal statement

What are your reasons for wanting to teach? What has given you the ambition to be a teacher?

Maybe you have been inspired by a teacher in the past.

What age and /or subject have you chosen and why have you applied for this chosen subject and/or age group?

Maybe you have experience of working in a summer camp for 5-11 year olds and found this a positive experience
OR you may have a real passion for your subject (secondary).

Reflect on your current level of subject knowledge including strengths and areas for development. What subjects do you study/ have you studied?

Think about what you have learnt so far, what have you enjoyed and why?

Evidence that you understand the realities, rewards & challenges of teaching.

Share some of your experiences of working with children/young people/adults

Give some examples (if you can)

What qualities and skills do you have that would make you suitable to teaching?

Can you communicate effectively? Are you patient? Do you enjoy seeing people learn new things?

Give examples of how you have demonstrated these skills.



UNIVERSITY of
WORCESTER

What else you can offer?

What are your
unique selling
points?

What makes
you/your
application stand
out?

What could you
offer a
school/setting?

Volunteering

Additional
courses/qualifications

Employment

Hobbies and
interests

What should you do now?

Attend

Get

Talk

Read

Sign up

Develop

Do

Apply



**UNIVERSITY of
WORCESTER**

The interview process

Group task

*Working with others &
communication skills*



Individual questions/interview

*Skills & qualities, roles, current
education issues/news*



UNIVERSITY of
WORCESTER

Any questions?

- Feel free to drop any questions into the chat and we'll answer them

Stay in touch

✉ s.wallett@worc.ac.uk

🌐 k.bubb@worc.ac.uk

☎ www.worcester.ac.uk



@universityofworcester



@worcester_uni



UNIVERSITY *of*
WORCESTER

Thank you

