

Geography Virtual Taster Event

Tuesday 8th December

16:30 – 17:00 | Welcome to Geography at Worcester!

17:00 – 17:45 | Sustainable development in Sub-Saharan Africa

17:45 – 18:15 | Q&A

100%
student satisfaction
2020 National Student Survey
Geography



PHYSICAL GEOGRAPHY

Ranked 1st (=) in the UK for **STUDENT SATISFACTION**
2020 National Student Survey



GEOGRAPHY

at the University of Worcester

100%
student satisfaction
2020 National Student Survey
Geography



1st

PHYSICAL GEOGRAPHY

Ranked 1st (=) in the UK for **STUDENT SATISFACTION**
2020 National Student Survey



University
of Worcester

What makes our Geography courses special?

- **BSc Geography**
BSc Geography with
International Year*
- **BSc Physical Geography**
BSc Physical Geography with
International Year*
- **BA Human Geography**
BA Human Geography with
International Year*

Our philosophy

Teaching and Research

- we do both, but...
- ...teaching is the most important thing we do
- our approach is therefore more student-focussed that you will in many other places



Geography at Worcester

Our strengths

1. A strongly applied emphasis
2. An outstanding fieldwork programme
3. Assessment: innovative, mostly coursework (few exams)
4. A friendly and supportive environment



What makes our Geography courses special?

1

A practical, hands-on approach

A practical, hands-on approach

apply what you have just learned
(e.g. practicals, fieldwork, seminars)

TEST AND EXTEND YOUR
UNDERSTANDING

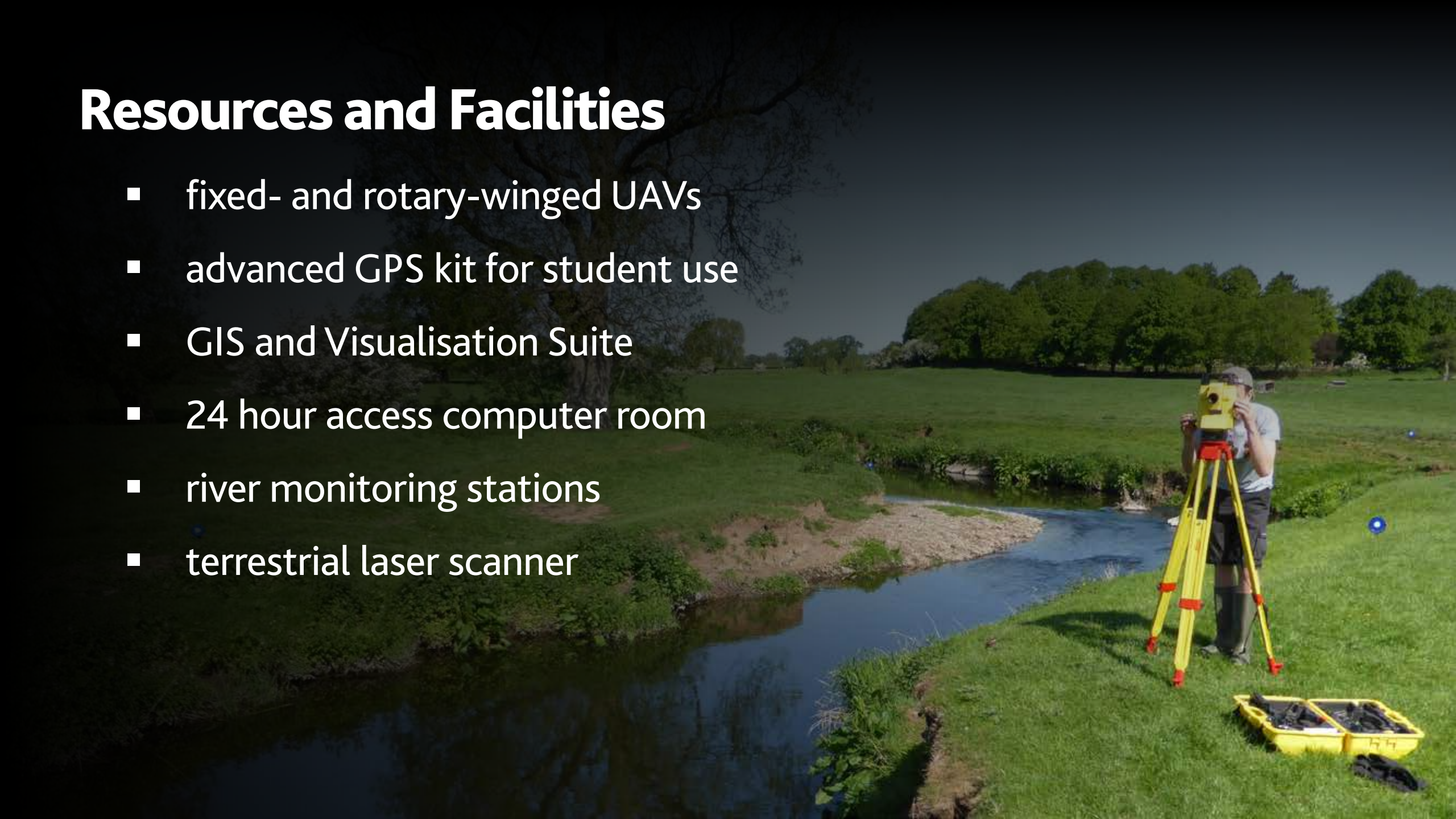
DEVELOP SPECIALIST AND
TRANSFERABLE SKILLS

Royal
Geographical
Society
with IBG

Accredited
Programme

Resources and Facilities

- fixed- and rotary-winged UAVs
- advanced GPS kit for student use
- GIS and Visualisation Suite
- 24 hour access computer room
- river monitoring stations
- terrestrial laser scanner



Class size really matters!

An important factor in determining
approaches to learning, teaching and assessment

Supportive, friendly atmosphere



What makes our Geography
courses special?



An outstanding fieldwork programme

Local fieldwork in most modules

- Rural – e.g. Vale of Evesham, various villages, farms
- Urban – e.g. Worcester, Birmingham
- Rivers – e.g. river monitoring stations on Leigh Brook, Salwarpe.
- Ice Age – e.g. sand and gravel quarries, Brecon Beacons
- Geology – e.g. Bredon Hill mudslide, Malverns



Residential field courses

- **Lake District** | 1st Year
included in fees
- **Scotland** | 2nd Year
included in fees
- **France** | 3rd Year
included in fees
- **Alps** | 3rd Year
included in fees
- **Malawi**
optional | 3rd Year
contribution required
- **California**
optional | 2nd or 3rd Year
contribution required

Field course destinations and fees are subject to change



YEAR 1: Lake District (4 days)

- first experience of residential fieldwork at University
- range of topics
- helps students find their feet – both academically and socially

YEAR 2: Scotland (7 days)

- students can choose from a range of physical and human geography activities
- human topics include highland culture, estate management, and urban change in Inverness
- physical topics include landscape change in Glen Feshie, geology and landscape, and glaciation

YEAR 3: European Alps (7 days)

- mountain hydrology, glaciers and glaciation, and climate change
- a range of techniques, including drone surveys



YEAR 3: Provence (7 days)

- rural diversification, tourism and heritage, and urban change



YEAR 3: Malawi (13 days)*

- inter-relationships between people and their environment
- undertake fieldwork with NGOs and local farmers in one of Africa's least developed countries

* Optional, subject to availability and student demand.
A contribution to the cost is required.

Year 3: California (10 days)*

- hazards, water management, arid geomorphology, and mountain landscapes
- includes Death Valley, Yosemite and San Francisco

* Optional, subject to availability and student demand.
A contribution to the cost is required.

What makes our Geography
courses special?

3

**Assessment: innovative,
mostly coursework**

Assessed mostly by coursework

EXAMPLES INCLUDE

- video podcasts
- geomorphological field guides
- consultancy exercise
- planning enquiry
- mapping
- essay
- presentation

Royal
Geographical
Society
with IBG

Accredited
Programme

Which course is right for you?



Geography at Worcester: our courses

BSc (hons) **Geography** (3 years)

BSc (hons) **Geography with International Year Abroad** (4 years)

BA (hons) **Human Geography** (3 years)*

BA (hons) **Human Geography with International Year Abroad**
(4 years)*

BSc (hons) **Physical Geography** (3 years)*

BSc (hons) **Physical Geography with International Year Abroad**
(4 years)*

* From 2021

Which course is right for you?

BSc Geography

For those who would like to study both
human and physical geography



Which course is right for you?

BSc Physical Geography

BA Human Geography

For those who would rather specialise
from the outset



Study abroad for a semester?

BSc Geography

BSc Physical Geography

BA Human Geography

option to spend a
semester studying
abroad



Study abroad for a whole year?

BSc Geography
with International Year

BSc Physical Geography
with International Year

BA Human Geography
with International Year



BSc Geography: **What will you study?**



BSc Geography: **first year**

Geographical Investigations

30 credits
(year-long)

Dynamic Earth

30 credits
(year-long)

Risk and Resilience

30 credits
(year-long)

People and Place

30 credits
(year-long)

BSc Geography: **first year**

residential field trip

Geographical Investigations

30 credits
(year-long)

Dynamic Earth

30 credits
(year-long)

Risk and Resilience

30 credits
(year-long)

People and Place

30 credits
(year-long)

personal academic tutorial
programme

BSc Geography: **second year**

GIS and Research Methods

30 credits
(year-long)

The Physical Geography of Mountain Environments

or

Rural-Urban Geographies

30 credits
(year-long)

Residential Field Course

15 credits

OPTION

OPTION

OPTION

personal academic tutorial
programme

BSc Geography: **second year optional modules**

- Meteorology and Climate
- River Monitoring and Assessment
- Natural Hazards
- Rural-Urban Geographies
- Contemporary Issues in Human Geography
- Geographies of Development
- Heritage Tourism and Place Promotion
- Climate Change: Science and Policy
- California Field Course: Dynamic Landscapes
- Optional modules offered by the Language Centre



BSc Geography: **third year**

Dissertation

30 credits
(year-long)

Residential Field Course

15 credits

OPTION

OPTION

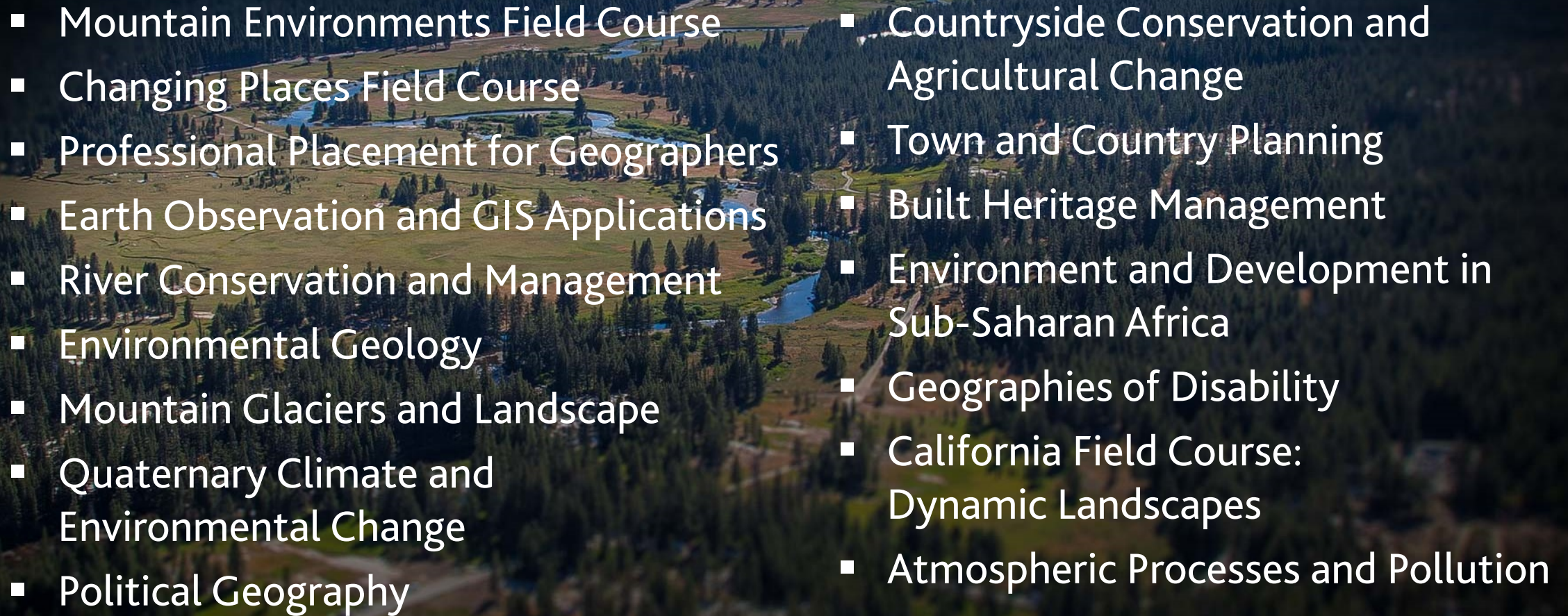
OPTION

OPTION

OPTION

personal academic tutorial
programme

BSc Geography: **third year optional modules**

- 
- Mountain Environments Field Course
 - Changing Places Field Course
 - Professional Placement for Geographers
 - Earth Observation and GIS Applications
 - River Conservation and Management
 - Environmental Geology
 - Mountain Glaciers and Landscape
 - Quaternary Climate and Environmental Change
 - Political Geography
 - Countryside Conservation and Agricultural Change
 - Town and Country Planning
 - Built Heritage Management
 - Environment and Development in Sub-Saharan Africa
 - Geographies of Disability
 - California Field Course: Dynamic Landscapes
 - Atmospheric Processes and Pollution

What else do you need to know?



Course structure, modules and other features

- a range of interesting, research-informed modules
- work placement module
- SAP (student as academic partner) programmes
- various employment opportunities

SEE OUR WEBSITE FOR MORE DETAILS



How are we doing?

- exemplary external examiner reports
- 90% graduated with an upper second or first class honours degree in 2020
- excellent employment rates (95% in employment or further study)

How are we doing?

100%

student satisfaction

2020 National Student Survey

**GEOGRAPHY,
PHYSICAL GEOGRAPHY**

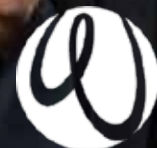


1st

PHYSICAL GEOGRAPHY

Ranked 1st (=) in the UK for STUDENT SATISFACTION

2020 National Student Survey



**University
of Worcester**

Not just about the course...

It is worth finding out about:

- historic City of Worcester
- beautiful surrounding countryside
- well-connected
- University – a small, friendly and supportive place to study and work

Questions?

Website | worchester.ac.uk

Email | sse@worc.ac.uk
| d.mcdougall@worc.ac.uk
| c.jones@worc.ac.uk

Teams, Skype and Zoom Meetings can be arranged. Please get in touch.

Discover more about Geography at Worcester

www.worcester.ac.uk

 **@GeographyUoW**

 **GeographyUoW**

 **uwgeography**

 **YouTube**

BA Human Geography

available with International Year Abroad

Royal
Geographical
Society
with RGS
Accredited
Programme

Department of Geography, Archaeology and the Environment
SCHOOL OF SCIENCE AND THE ENVIRONMENT

BSc Geography

available with International Year Abroad

Royal
Geographical
Society
with RGS
Accredited
Programme

Department of Geography, Archaeology and the Environment
SCHOOL OF SCIENCE AND THE ENVIRONMENT

University
of Worcester

BSc Physical Geography

available with International Year Abroad

Department of Geography, Archaeology and the Environment
SCHOOL OF SCIENCE AND THE ENVIRONMENT

University
of Worcester