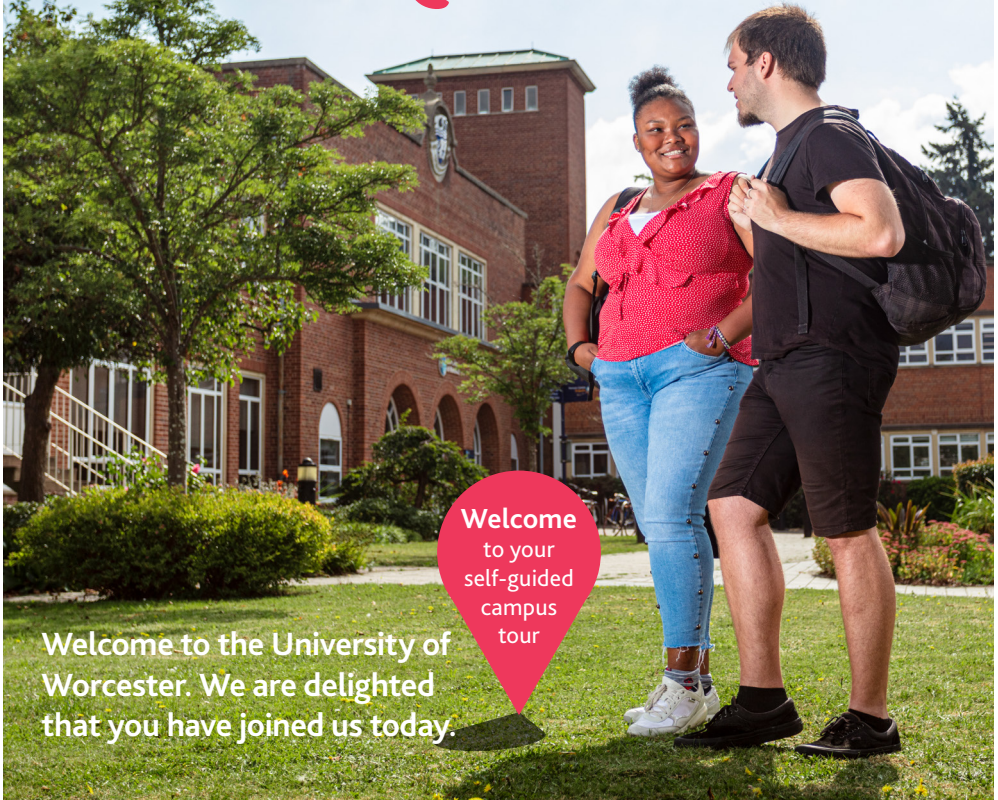


Campus

2020 TOUR GUIDE



Welcome to the University of Worcester. We are delighted that you have joined us today.

Welcome
to your
self-guided
campus
tour

We are taking a slightly different approach to our campus tours today, due to the extraordinary circumstances caused by the global coronavirus pandemic. We have produced this guide so that you and your guests can explore the campus yourselves, without an assigned tour guide. But don't worry, we've got lots of friendly faces along the route.



This information sheet will guide you around our St John's campus in approximately 45 – 60 minutes.

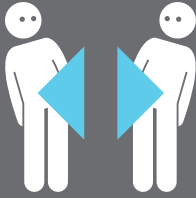


THE AWARDS
2020

SHORTLISTED

#THEAwards

UNIVERSITY OF THE YEAR



Social distancing

The safety and well-being of our visitors, students and staff is our top priority. We've set up today's event so that everyone can easily follow the current social distancing recommendations. You'll also find information points and hand sanitiser throughout the campus. Here are a few guidelines for the tour:

- Please follow the suggested route, which uses a one-way system. You are welcome to go around the circuit more than once (hint: like an Ikea store!)
- You'll see our student ambassadors along the route. They are looking forward to meeting you, but please stand back to have your conversations with them
- Stay with your group. Although you might have a slow group in front of you, please try to avoid 'catching-up' with them and forming a large group (hint: it's like playing a round of golf!)
- Bathrooms, including handwashing facilities, are available in the main, Edward Elgar building. Please note the room capacity signage at the entrance to manage the number of people in bathrooms and wait outside if it looks too busy.
- In line with Government legislation in England, face coverings are mandatory in some University settings, including our library, café and our Campus shop. We are strongly recommending that students, staff and visitors wear a face covering in all other indoor settings, particularly when you are moving around campus.

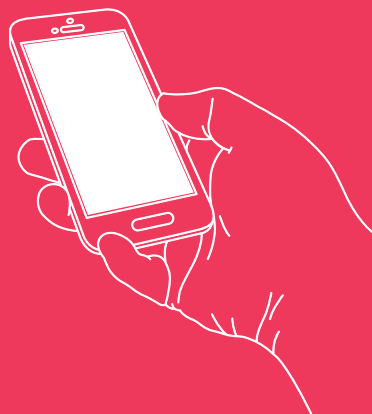
Thank you

for helping us all stay safer

Let's begin our tour of the St. John's campus



This printed guide is accompanied with an audio tour, which is available on SoundCloud



Using this Guide. Your tour starts from Car Park M by our Severn Gate entrance and will follow a set route clockwise around the campus.

The campus tour map is on the next page which will help you find your way around campus (as well as our directional signage along the route). Here are some of the course areas that the facilities are used by. Please be aware that the facilities are not open to view today.

1. Sheila Scott – Nursing, Midwifery, Occupational Therapy, Paramedic Science and Physiotherapy
2. Sports Centre – Sports and Physical Education, Sports Therapy (and anyone interested in the on-campus gym or University sports teams)
3. Charles Darwin – Biochemistry, Biomedical Science and Biological Sciences
4. Drama Studio – Dance, Drama and Performance courses

Firstpoint, the Campus Shop and the Students' Union are used by all our students. Also, make sure to check out our Accommodation zone!



ACCOMMODATION ZONE

FLATS TO VIEW:

Evesham

Berrow

Elizabeth Barrett Browning

Accommodation

Astroturf

Students' Union

Campus Shop

Sport

Drama St

Reception



Firstpoint





FINISH

START

CAR PARK

REGISTRATION

Astroturf

s Centre

Studio

Sheila Scott

Charles Darwin

If in doubt
about anything,
just ask.

*We are here
to help*

A walking tour beyond St. John's

Your tour of our St. John's campus is now complete, but there are a number of other University of Worcester facilities nearby.

You are very welcome to take a look inside The Hive Library (D) which is just a 5 minute walk from the City Campus. The map shows you the walking route but if you wish to drive, you can park for free at the Jenny Lind building (WR1 3BB) and the Art House (WR1 3ZQ).

The University has three main sites: St John's Campus, City Campus and Severn Campus as well as the nearby Lakeside Campus.

The St John's and City Campus are a pleasant 20 minute walk from each other, with the Severn Campus conveniently situated between the two.

The City of Worcester has previously been voted the happiest city in the UK, as well as finishing in the top three for both safety and friendliness, making it an ideal city in which to make your home. To explore the city centre walk through our city campus and turn right at the gates which will take you past the Jenny Lind building and towards the main shopping centre.



Exit the St John's Campus via the Severn Gate (A) and proceed to the traffic light-controlled crossing of Hylton Road which is the main road down the slight hill. Follow the footpath down Hylton Road which will lead you to the Riverside Campus and The Arena (C). If you wish to see the City Campus and The Hive (D), carry straight

on and cross over the river using the Worcester Bridge. Once over the bridge, turn left and continue walking along the river. You will see our golden Hive building ahead, and just behind that, the City Campus. Please be aware that the facilities are not open to view today but you can visit The Hive as this is also a public library.





Find out more

You can find out more about all of our facilities on our website [worcester.ac.uk](https://www.worcester.ac.uk)

You are welcome to visit again. We expect to have many more facilities open for viewing in the coming weeks, and will continue to post updates on our website.

If you have any questions, please get in touch with us on study@worc.ac.uk

[Thank you for visiting and we hope to see you again soon!](#)