



Learning Destination Watch – Summer 2018

Welcome to this edition of Worcestershire CU Learning Destination Watch listing 'Public' Learning Destinations.



The poster features a large circular logo on the left with a cartoon illustration of Jacqueline Wilson. The text 'JACQUELINE WILSON' is arched over the top, 'Creative Writing Prize 2018' is arched along the bottom, and 'JACQUELINE WILSON' is written in large blue letters in the center. To the right, the text 'CALLING ALL STORYTELLERS!' is in large white letters. Below it, it says 'Tell us a tale for the chance to have your story published in a JACQUELINE WILSON book.' and 'ENTER NOW!' in large white letters. There are also illustrations of a penguin, stars, an ink bottle, and a pencil.

Do you have a story in you? Then tell us a tale for a chance to win the Jacqueline Wilson Creative Writing Prize 2018.

One lucky winner will have their story published in a Jacqueline Wilson book! They'll also receive £100's worth of WH Smith Vouchers, a year's subscription to First News, a book bundle for their school library AND get to meet Jacqueline herself.

How to win! All you need to do is write a story between 750 and 1000 words about an **UNLIKELY FRIENDSHIP** using the first line below, written by Jacqueline herself:

I'd wanted to find a special friend ever since I came here. However, I never thought I'd find such an amazing one! ...

It's up to you to decide where the story goes after that but it must be something that you've made-up and not be about anyone or anything real. Read more at <https://www.penguin.co.uk/puffin/articles/competitions/the-jacqueline-wilson-creative-writing-prize-2018/#6h8wV4zHGVLXowQd.99>

If your child enters this creative writing competition, send us proof of entry (along with the story) and we will issue a maximum of 2 Learning Credits!



MULTISPORTS

BOOK NOW FOR SUMMER 2018!!

Starts Weds 25th July through to 31st August

*****SPECIAL OFFER FOR SUMMER 2018*****

**BOOK 2 CHILDREN FOR £40 AND
SAVE £10.00 PER DAY!**



FOOTBALL CHALLENGE

**BRAND NEW VENUE - ECKINGTON
RECREATION CENTRE**

**BOOK FOOTBALL CHALLENGE NOW FOR
SUMMER 2018!!**

SUMMER 2018 - 3 Course Weeks

30th July to 3rd August - 5 Days

13th August to 17th August - 5 Days

27th August to 31st August - 5 Days



**VISIT OUR HUGELY POPULAR
DANCE CHALLENGE WEBSITE**

www.dancechallenge.org.uk

**SPORTSCHALLENGE PROVIDE EXTRA-CURRICULAR AND AFTER SCHOOL SPORTS COACHING
SERVICES TO MANY LOCAL SCHOOLS**

For further details please call 01386 300726 or email info@sportschallenge.org.uk or
bookings@sportschallenge.org.uk

White Lotus Martial Arts



Saturday 10-11.30. Family kickboxing.

First session free at Lyppard Hub,
Warndon villages

Tuesday 7-8.30 pm kickboxing first
session free at Warndon Community
Centre

RIVERSIDE BALLET

Riverside Ballet is a friendly dance school based in Evesham where everyone is welcome! Established by Holly Kent in 2009 the school continues to grow each year with now over 160 students taking classes each week!

Classes are offered in RAD Ballet, Jazz and Contemporary. There are chances for students to take part in performances, take RAD Ballet exams and most importantly dance with their friends each week! If you would like more information please contact Holly Kent on 07791544013, hkent88@hotmail.co.uk or check us out on www.riversideballet.co.uk and on Facebook!



Sudeley Castle

Summer holidays at Sudeley can only mean one thing – the return of Children's Wednesdays every single week! From 25 July until 29 August, every Wednesday will be packed full of fun for

children of all ages. From a bouncy castle and inflatable activity centre for under-fives, to a seven metre rock climbing wall for older thrill seekers. Activities are included in the price of a general admission ticket and the fun starts at 10am each week – it's not to be missed!



Our Adventure Playground has also been voted the best playground for children in Gloucestershire by SoGlos so this teamed with our children's Wednesdays really does make us one of the best family days out. Entry to these events and our playground are included in our general admission fee.

Further information can be found on our website
<https://sudeleycastle.co.uk/visit-us/events/>



Worcester City Art Gallery and Museum

EEK! – a giant Ice Age batik!

Wednesday 1st August – Art Gallery and Museum
11:00 – 15:00

Audience: 7 years + (pre-booking required)

Join Marie-Therese King from Eekbatik to design and produce a GIANT Ice Age geology batik for our gallery! You will learn the traditional art of Indonesian Batik – working with wax and the most wonderful colour dyes. Please bring a packed lunch or visit the Balcony Café.

Prehistoric pottery pots + clay impressions

Thursday 2nd August – Art Gallery and Museum
11:00 – 15:00

Family Drop in day
£3pp for materials

. Come along to make your very own prehistoric pots and clay impression - we will work with terracotta clay and natural printing materials to produce lovely, textural results.

Cave Art Day!

Thursday 9th August – Art Gallery and Museum
11:00 – 15:00

Family drop in day
£3pp for materials

This will be a fun, messy session – we will make paints from natural pigments, draw with charcoal and create a colourful cave art mural for the Activity Space.

Ice Age in Miniature

Monday 13th August – Art Gallery and Museum
11.00 - 3.00

Family drop in day
£3pp for materials

Using lots of wonderful collage materials, let your imagination go WILD and WOOLLY to create your very own mini Ice Age world.

Ice Age Costumes and Adornment

Thursday 23rd August – Art Gallery and Museum
11:00- 15:00

Family drop in day
£3pp for materials

This will be a scraptastic day – have fun exploring all the materials to create an Ice Age show stopper!

Ice Age print making day

Wednesday 29th August - Art Gallery and Museum
11:00 – 15:00

Family drop in day
£3pp for materials

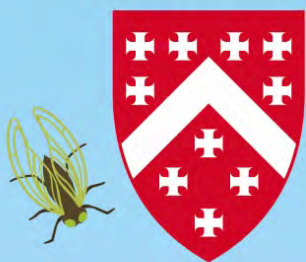
Join Stephen Fowler to create some amazing Lost Landscape prints – Stephen is a keen primitive print maker, an Illustrator and Artist Book Maker

Lost Landscapes Exhibitions 16th June – 8th September

Origins of Us – An exhibition exploring what it means to be human. Set against the back drop of Darwin's Origin of Species and the emergence of our understanding of evolution and the antiquity of humankind, the story of how 19th century collectors acquired, shared and discussed extraordinary ideas and specimens, which spoke of distant aeons, is the story of how we understand what it means to be human. The decades of the early to mid-nineteenth century tell a story of scientific advancement, religious belief and the characters and collectors who unravelled the story of the Ice Age and early man. Prehistoric artefacts from across Britain and Europe were deposited at Worcester Museum, one of the earliest museums in the country, and consequently, we are able to explore the understanding of this period across Europe. Many of the objects link Worcester to key players in this emerging science and the type-sites that characterised societies and technologies. Visitors' own understanding of what the term Ice Age means will be interpreted through the discoveries of these nineteenth century antiquarians and geologists.

Through the Mists of Time - An immersive experience inspired by the evolution of humans towards the end of the last Ice Age that led to the birth of modern society. As part of the Lost Landscapes project, and funded through Arts Council England, there will be an audio visual installation celebrating imagination and human ability to go beyond the here and now, constructing shared systems of beliefs and creating symbols, ceremonies and rituals. Digital artists SDNA produce distinctive digital artworks and vibrant interactive experiences for a range of settings, from intimate small-scale pieces to ambitious projected installations for outdoor spaces and iconic buildings. We aim to extend the possibilities and reach of digital art by exploring the interaction between moving image, installation, virtual reality and live performance, and by collaborating with a diverse range of participants and audiences. www.movingimage.art.

Ice Age - From woolly mammoths bathing in the River Severn to prehistoric lions, hunting the grasslands beneath Bredon Hill. Paleolithic life in Worcestershire was diverse and fascinating and has left behind a rich tapestry of evidence to interest and inspire current and future generations. The exhibition will display the best Paleolithic artefacts and animal assemblages from the West Midlands region. The themes of the exhibition will include climate change and evolving landscapes, looking at a current issue through past changes, as well as focusing on how our ancestors lived and died in the distant past. Worcester was one of the earliest museums in the country and has material collected from across the world as well as exciting and intriguing specimens from right here in Worcestershire



Spetchley Park — Gardens —

Wildlife Wednesdays

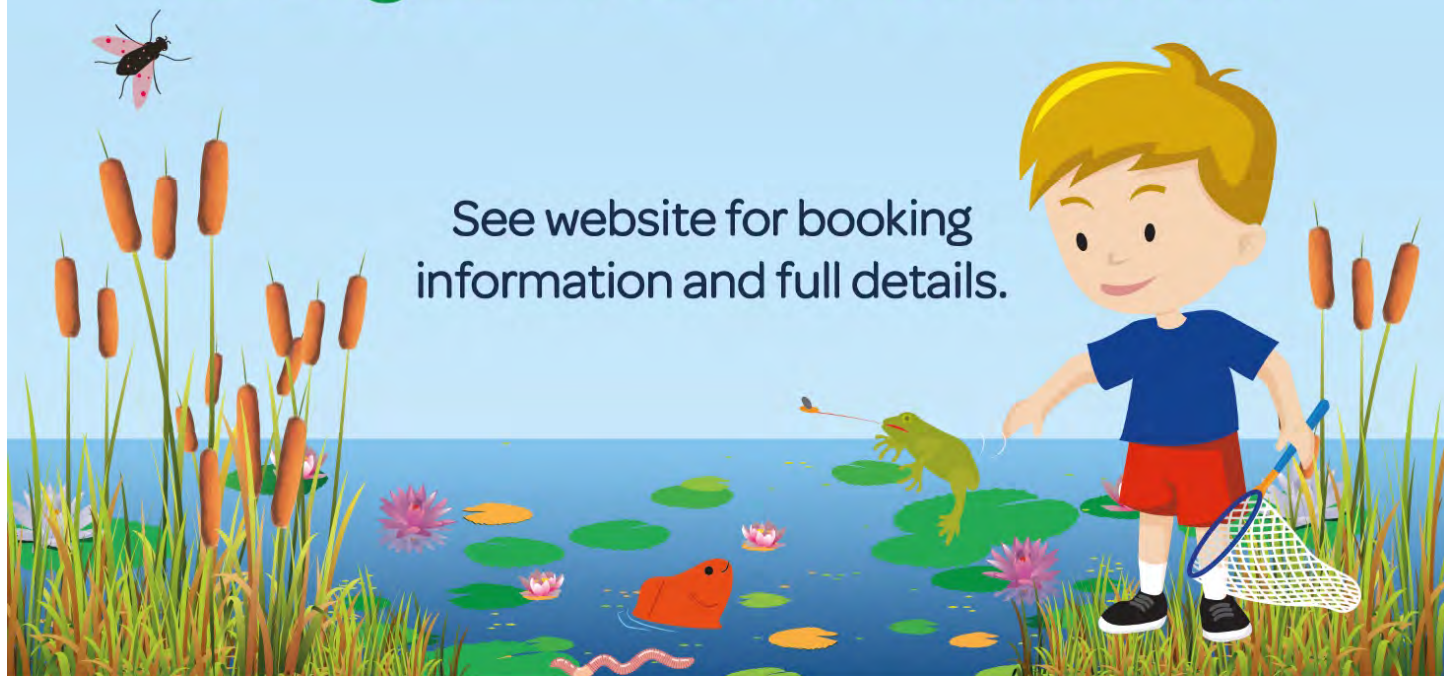
1 August – Pond Dipping

8 August – Willow Workshop

15 August – Minibeast Explorer

22 August – Plant & Flower Crafts

See website for booking
information and full details.



Find out more at www.spetchleygardens.co.uk
Spetchley Park Gardens, Spetchley, Worcester WR5 1RS



SpetchleyParkGardens



@SpetchleyPark



/spetchleygardens

Croome Court Summer Trail

It's all in the Coade - Family Trail

Eleanor Coade was a famous woman who designed and created the stone used in many of the statues at Croome. Can you find them all?



Photo credit: Chris Lacey



£2 per trail including prize. Note: Normal admission applies to Croome.

10am-4pm, 21 July – 2 September 2018



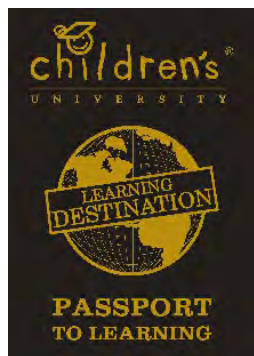
Superweek holidays are jam-packed week long adventures for children aged 8-16. These weeks are residential, and provide children with a brilliant opportunity to be independent and challenge themselves by making new friends, playing new games, working as a team, exploring, building dens in the woods, having stories around the campfire, and so much more. We've been running them for over 50 years, and our staff are bursting full of activities and imaginative games to make each week a memorable and valuable experience. You can find out more information at

<http://www.superweeks.co.uk/superweeks/>

This year, our weeks that still have availability are:

The UltimATE Escapade, Friday 27th July – Friday 3rd August, ages 8-14, at Frank's Place
Hijinx at the Hall, Saturday 4th – Saturday 11th August, ages 8-14, at Edgmond Hall
A Grand Adventure, Monday 13th – Monday 20th August, ages 8-14, at Frank's Place
Action and Adventure, Tuesday 21st – Tuesday 28th August, ages 10-15, at Abberley Hall





Summer Football Fun Week 2018

South Bromsgrove High School
Charford Road, Bromsgrove, B60

3NL

MONDAY 6th AUGUST - FRIDAY 10th AUGUST

10.00 a.m. - 3.00 p.m. FOR ALL PLAYERS AGED 4 - 14

The course, run by F.A. Qualified and DBS checked coaches, along with Ex Scottish International & Premier League Player Paul Devlin. Paul has played for Birmingham City, Sheffield Utd, Watford, Notts County, Walsall and Scotland, also named Midlands Sports Writers Player of the Year.

The tightly structured course with players fully supervised at all times. The reception class children have a very popular group of their own, and despite parents reservations, have a fantastic time through the wide range of fun activities and the encouragement they receive from their coaches. Players are grouped together according to age, ability and experience.

The course is for **5 days from 10.00am – 3.00pm** with lunch from 12.15 – 1.00pm where the children can eat a packed lunch bought from home. Parents are most welcome during the course; indeed the family atmosphere increases everyone's enjoyment. On **Friday at 2.00pm, there is a presentation** when parents and friends are most encouraged to come and see the players receive their awards.

The cost of the course is **£55 (£40 for second and subsequent brothers and sisters, when paid in full prior to or on the start date, £15 per day, per child thereafter)**, which covers all coaching, referees, trophies, certificates and many other awards presented. **ALL CHILDREN ARE GUARANTEED TO RECEIVE AT LEAST ONE TROPHY AND CERTIFICATE.**

To BOOK a place please complete the form and return to the address below, with payment.

Call/Text 07583912703,

Alternatively, book online at: www.pauldevlinfootballcoaching.co.uk.

Name(s) D/O/B(s)

Email Address
.....

Any Medical Condition(s)

Address:
.....

Post Code: Tel. No

I enclose cheque/cash for £..... I give my permission for my child(ren) to attend the 2018 Bromsgrove Summer football Course at South Bromsgrove High School. I understand the organisers and coaches cannot be held responsible for loss, damage or personal injury.

Signed: Parent/Guardian Date:

Please make cheques payable to: Paul Devlin Football Coaching and return with completed form to: 48 Shooters Hill, Sutton Coldfield, Birmingham, B72 1HX



WORCESTER
CATHEDRAL

FREE
ACTIVITIES

MAKE A CLAY GARGOYLE
SAFARI TRAIL
BRASS RUBBING
KNITTING
BALLOON MODELLING
MAKE A STAINED GLASS WINDOW
PAPER CRAFTS

CHILDREN'S SUMMER HOLIDAY ACTIVITIES

COME ALONG TO WORCESTER CATHEDRAL THIS SUMMER AND HAVE A GO AT A RANGE OF FREE CRAFT ACTIVITIES!

14TH, 15TH, 17TH, 21ST, 22ND AND 24TH AUGUST 2018
10.30 A.M.-12.30 P.M. AND 2 P.M.-4 P.M.

SUITABLE FOR CHILDREN AND ADULTS OF ALL AGES



JOIN US FOR AN ARTISTIC EXPLOSION OF CRAFTS, ROCKS AND FOSSILS - CREATE YOUR OWN FOSSILISED SEA BED, PRODUCE A PEBBLE PAINTING AND LET YOUR IMAGINATION ROCK!

THURSDAY 16TH AND 23RD AUGUST
10.30 A.M.-12.30 P.M. AND 2 P.M.-4 P.M.
CHAPTER HOUSE - FREE, DONATIONS WELCOME

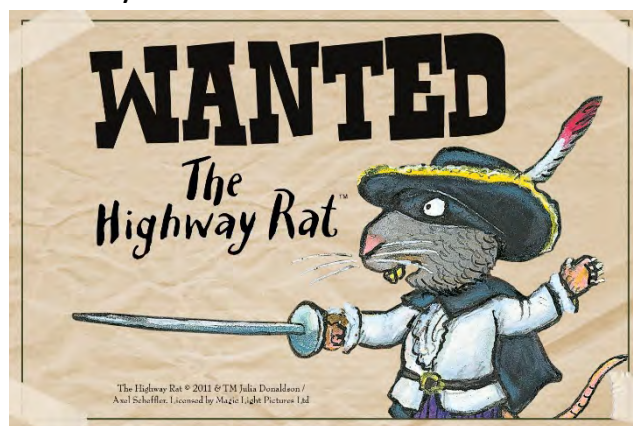
FORESTRY COMMISSION



Join the Highway Rat on his forest adventure, completing fun activities and spotting characters from the story as you go on your way to earning a 1 hour Children's University stamp. Visit the trail at Wyre, near Bewdley or



Haughmond Hill, near Shrewsbury and buy a Highway Rat activity pack from the Forest Café for £3. Inside you'll find activities, stickers, puzzles and a Highway Rat mask. To earn your 1 hour passport stamp, send photos of your cave drawing and journey stick, along with the first two lines of the song you made up for the animals to sing at their party [to us by email](mailto:learning.english@forestry.gsi.gov.uk) (learning.english@forestry.gsi.gov.uk). Please include your name, age and which forests you visited in the email.



Discover Your Forest activity <https://www.forestry.gov.uk/forestry/BEEH-A6DHFS>



KIDS RUN FREE

Kids Run Free - Worcester

Perdiswell Leisure Centre, Bilford Road,
Worcester WR3 8DX

First Saturday of every month

Warm ups and registration from 8.45am

Running starts at 9am for approximately an hour

All ages and abilities welcome



For more information and to check out our other locations, please visit www.kidsrunfree.co.uk

Marathon Kids is an exciting programme that gives primary school children the opportunity to run or walk the distance of up to four marathons throughout the school year. It emphasises personal achievement; aiming to inspire and empower children of all fitness levels to set and achieve goals.

The Marathon Kids programme takes this remarkable achievement and breaks it down in a way that encourages children of any fitness ability to set and reach personal goals. We are proud to have the support of global Marathon Kids Ambassador, Sir Mo Farah, inspiring the next generation of Marathon Kids to get moving!



To find out more go to www.marathonkids.co.uk and sign your school up today.

Share your pictures and
find out



AZTEC

Upton Warren

2018 Activities



It is essential that all activities are booked in advance. You can now book activities online by following the link www.aztecadventure.co.uk/upton-warren/book-now/ alternatively call 01527 861426.

*An early bird breakfast club for all our summer holiday courses is also possible. This starts at 8am and costs an additional £5 per day.

Summer Family Activity Days | 9.30am -5pm. PRICE IS PER 1.5 HOUR ACTIVITY SESSION

| Course Ref | Activity | Duration | Age | Dates | Cost |
|----------------------|--|--------------------------|----------|------------|--|
| UW6/S/31 | Summer Family ActivityDay – Archery, Climb, Canoe, Kayak | Each activity 1.5 hrs | 8+ years | 28thJuly | Child £12 pp per session Adult £15 pp per session |
| UW6/S/32 | Summer Family ActivityDay - Archery, Climb, Canoe, Kayak | Each activity 1.5 hrs | 8+ years | 11thAugust | Child £12 pp per session Adult £15 pp per session |
| UW6/S/33 UW6/S/34 | Summer Family ActivityDay - Archery, Climb, Canoe, Kayak | Each activity 1.5 hrs | 8+ years | 27thAugust | Child £12 pp per session Adult £15 pp per session |

July, August and Family Stand up Paddle boarding Taster Sessions

| Course Ref | Activity | Duration | Age | Dates | Cost |
|----------------------|-----------------------------------|----------|----------------------|----------|--|
| UW6/S/70 UW6/S/71 | 9.30am - 11.00am 11.30pm - 1pm | 1.5hours | 11+ years - Adult | 21stJuly | Child £12 pp per session Adult £15 pp per session |
| UW6/S/74 UW6/S/75 | 9.30am - 11.00am 11.30pm - 1pm | 1.5hours | 11+ years - Adult | 18thAug | Child £12 pp per session Adult £15 pp per session |

Summer School Holiday Courses | 9.30am - 4pm *An early bird breakfast club for summer holiday courses starting at 8am is an additional £5 per day.

| WEEK ONE: 25TH JULY TO 27TH JULY 9.30AM - 4PM. 8 - 10 year olds | | | | |
|---|-------------------------|----------|----------------|---------|
| Course Ref | Activity | Duration | Dates | Cost |
| UWS 1.1 | Multi ActivityDay | 1 day | Wednesday | £30 pp |
| UWS 1.2 | Water Activity Day | 1 day | Thursday | £30 pp |
| UWS 1.3 | Land ActivityDay | 1 day | Friday | £30 pp |
| 8 - 15 year olds | | | | |
| UWS 1.6 | PaddlingTaster | 1 day | Thursday | £35 pp |
| UWS 1.7 | Windsurfing Taster | 1 day | Friday | £35 pp |
| 11 - 15 year olds | | | | |
| UWS 1.8 | Adventurous ActivityDay | 1 day | Wednesday | £30 pp |
| UWS 1.9 | Land ActivityDay | 1 day | Thursday | £30 pp |
| UWS 1.10 | Water Activity Day | 1 day | Friday | £30 pp |
| WEEKTWO:30TH JULY TO 3RDAUGUST 9.30AM - 4PM. 8 – 10 year olds | | | | |
| UWS 2.1 | Multi ActivityWeek | 5 days | MondaytoFriday | £139 pp |
| UWS 2.2 | Multi ActivityDay | 1 day | Monday | £30 pp |
| UWS 2.3 | Land ActivityDay | 1 day | Tuesday | £30 pp |
| UWS 2.4 | Multi ActivityDay | 1 day | Wednesday | £30 pp |
| UWS 2.5 | Water Activity Day | 1 day | Thursday | £30 pp |
| UWS 2.6 | Multi ActivityDay | 1 day | Friday | £30 pp |
| 11 - 15 year olds | | | | |
| UWS 2.10 | AdventurousActivityWeek | 5 days | MondaytoFriday | £139 pp |
| UWS 2.11 | Adventurous ActivityDay | 1 day | Monday | £30 pp |
| UWS 2.12 | Water Activity Day | 1 day | Tuesday | £30 pp |
| UWS 2.13 | Adventurous ActivityDay | 1 day | Wednesday | £30 pp |
| UWS 2.14 | Land ActivityDay | 1 day | Thursday | £30 pp |
| UWS 2.15 | Adventurous ActivityDay | 1 day | Friday | £30 pp |
| WEEKTHREE:6THAUGUSTTO 10THAUGUST 9.30AM - 4PM. 8 - 10 year olds | | | | |
| UWS 3.1 | Multi ActivityWeek | 5 days | MondaytoFriday | £139 pp |
| UWS 3.2 | Multi ActivityDay | 1 day | Monday | £30 pp |
| UWS 3.3 | Land ActivityDay | 1 day | Tuesday | £30 pp |
| UWS 3.4 | Multi ActivityDay | 1 day | Wednesday | £30 pp |
| UWS 3.5 | Water Activity Day | 1 day | Thursday | £30 pp |

| | | | | |
|--|---------------------------|--------|------------------|---------|
| UWS 3.6 | Multi Activity Day | 1 day | Friday | £30 pp |
| 11 - 15 year olds | | | | |
| UWS 3.10 | Adventurous Activity Week | 5 days | Monday to Friday | £139 pp |
| UWS 3.11 | Adventurous Activity Day | 1 day | Monday | £30 pp |
| UWS 3.12 | Water Activity Day | 1 day | Tuesday | £30 pp |
| UWS 3.13 | Adventurous Activity Day | 1 day | Wednesday | £30 pp |
| UWS 3.14 | Land Activity Day | 1 day | Thursday | £30 pp |
| UWS 3.15 | Adventurous Activity Day | 1 day | Friday | £30 pp |
| WEEK FOUR: 13TH AUGUST TO 17TH AUGUST 9.30AM - 4PM. 8 - 10 year olds | | | | |
| UWS 4.1 | Multi Activity Week | 5 days | Monday to Friday | £139 pp |
| UWS 4.2 | Multi Activity Day | 1 day | Monday | £30 pp |
| UWS 4.3 | Land Activity Day | 1 day | Tuesday | £30 pp |
| UWS 4.4 | Multi Activity Day | 1 day | Wednesday | £30 pp |
| UWS 4.5 | Water Activity Day | 1 day | Thursday | £30 pp |
| UWS 4.6 | Multi Activity Day | 1 day | Friday | £30 pp |
| 11 - 15 year olds | | | | |
| UWS 4.10 | Adventurous Activity Week | 5 days | Monday to Friday | £139 pp |
| UWS 4.11 | Adventurous Activity Day | 1 day | Monday | £30 pp |
| UWS 4.12 | Water Activity Day | 1 day | Tuesday | £30 pp |
| UWS 4.13 | Adventurous Activity Day | 1 day | Wednesday | £30 pp |
| UWS 4.14 | Land Activity Day | 1 day | Thursday | £30 pp |
| UWS 4.15 | Adventurous Activity Day | 1 day | Friday | £30 pp |
| WEEK FIVE: 20TH AUGUST TO 24TH AUGUST 9.30AM - 4PM. 8 - 10 year olds | | | | |
| UWS 5.1 | Multi Activity Week | 5 days | Monday to Friday | £139 pp |
| UWS 5.2 | Multi Activity Day | 1 day | Monday | £30 pp |
| UWS 5.3 | Land Activity Day | 1 day | Tuesday | £30 pp |
| UWS 5.4 | Multi Activity Day | 1 day | Wednesday | £30 pp |
| UWS 5.5 | Water Activity Day | 1 day | Thursday | £30 pp |
| UWS 5.6 | Multi Activity Day | 1 day | Friday | £30 pp |
| 11 - 15 year olds | | | | |
| UWS 5.10 | Adventurous Activity Week | 5 days | Monday to Friday | £139 pp |
| UWS 5.11 | Adventurous Activity Day | 1 day | Monday | £30 pp |
| UWS 5.12 | Water Activity Day | 1 day | Tuesday | £30 pp |
| UWS 5.13 | Adventurous Activity Day | 1 day | Wednesday | £30 pp |
| UWS 5.14 | Land Activity Day | 1 day | Thursday | £30 pp |
| UWS 5.15 | Adventurous Activity Day | 1 day | Friday | £30 pp |
| WEEK SIX: 27TH AUGUST TO 31ST AUGUST 9.30AM - 4PM. 8 - 10 year olds | | | | |
| UWS 6.1 | Multi Activity Day | 1 day | Tuesday | £30 pp |
| UWS 6.2 | Water Activity Day | 1 day | Wednesday | £30 pp |
| UWS 6.3 | Land Activity Day | 1 day | Thursday | £30 pp |
| UWS 6.4 | Multi Activity Day | 1 day | Friday | £30 pp |
| 11 - 15 year olds | | | | |
| UWS 6.7 | Adventurous Activity Day | 1 day | Tuesday | £30 pp |
| UWS 6.8 | Land Activity Day | 1 day | Wednesday | £30 pp |
| UWS 6.9 | Water Activity Day | 1 day | Thursday | £30 pp |
| UWS 6.10 | Adventurous Activity Day | 1 day | Friday | £30 pp |

Lakeside Campus Holiday Programme

| Time | Monday | Tuesday | Wednesday | Thursday | Friday |
|---------------|------------------------------------|--------------------------|------------|---------------|-------------------|
| 08:30 – 08:45 | Arrival and Sign In | | | | |
| 08:45 – 10:00 | Multi Sports | | | | |
| 10:00 – 11:15 | Archery | Treeless Ropes | Bush Craft | Zip Wire | Team Games |
| 11:15 – 12:30 | Archery | Treeless Ropes | Bush Craft | Zip Wire | Orienteering |
| 12:30 – 13:15 | Lunch Break | | | | |
| 13:15 – 14:30 | Kayaking | Stand Up Paddle Boarding | Canoeing | Raft Building | Rookie Lifeguards |
| 14:30 – 15:45 | Kayaking | Stand Up Paddle Boarding | Canoeing | Raft Building | Rookie Lifeguards |
| 16:00 – 17:00 | Multi Sports (Departure/ Sign Out) | | | | |

PLEASE NOTE

- Suitable for ages 6 - 14yrs
- Timetable is subject to change depending on weather conditions and numbers booked
- Order of timetable will change when running more than one group in a day

Once your booking is confirmed, you will be notified about any kit you need to bring and equipment provided by the University of Worcester. We will also provide guidance on suitable footwear and clothing appropriate to the activities signed up for and information regarding food and drink. FOR MORE INFORMATION Call: 01905 622 223 or email: Lakeside@worc.ac.uk
Book online at: <https://ext-webapp-01.worc.ac.uk/lakeside/>

- 1-5 Days £30.00pp/pd
- 6–10 Days £25.00pp/pd
- 11+ Days £20.00pp/pd



**SPORTS IN
EDUCATION**



Summer Camps

Football and Multi Sports



Week 1: Wed 25th - Fri 27th Jul
Week 3: Mon 6th - Fri 10th Aug
Week 5: Mon 20th - Fri 18th Aug

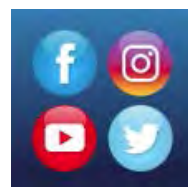
Week 2: Mon 30th - Fri 3rd Aug
Week 4: Mon 13th - Fri 17th Aug
Week 6: Tue 28th - Fri 31st Aug

9:00-3:00 Just £12.50 per day
Hollymount Primary School,
Worcester, WR4 9SG

We accept Childcare Vouchers!

Find us on Social Media...

For more information please contact us on: 07482 189980 |
footballfuncamps@gmail.com | footballfuncamps.com





Worcestershire Wildlife Trust Lower Smite Farm

Family Activities for ages 4 – 11, £3.50 per child, children must be accompanied.

Minibeast Mystery

Wednesday 1st August 10am – 12pm
Go on a minibeast hunt and try out pond dipping

Whose Poo?

Wednesday 22nd August 1pm – 3pm
Explore our woodland and try to identify animals by their tracks and droppings.

Birmingham Botanical Gardens

THE **BIRMINGHAM**
BOTANICAL
GARDENS
AN EDUCATIONAL CHARITY

Paw Patrol

Date: Wednesday 1st August 2018

Time: 11am – 3pm (Doors open: 10.00am)

Head down to The Botanical Gardens with the little ones this summer holiday to see Paw Patrol. We will have characters from the show making appearances at



intervals throughout the day. Family Admission Tickets are £25.00 and includes entry to the gardens and a 6-month family membership to the Botanical Gardens – perfect for the summer!

Circus

Date: Tuesday 21st August 2018

Performance times: 1pm, 2.30pm, 4pm (Doors open: 10.00am)

Price: £5.00 (does not include admission into the Gardens)
Roll up! Roll up! Bring the kids along for the Circus at the Gardens!

We will be hosting our annual Circus on the Main Lawn! Come and join us again for our circus spectacular, with plate spinning, juggling, clowns and more! Suitable for all the family!

Tickets must be pre-booked online:

<https://www.birminghambotanicalgardens.org.uk/events/circus-4/>



Teddy Bears' Picnic



Date: Wednesday 22nd August 2018

Time: 11am – 3pm (Doors open: 10.00am)

If you go down to the Gardens today, you're sure of a big surprise...

The annual Teddy Bears' Picnic is the highlight of every Birmingham bear's calendar. Little ones and their furry friends are invited for a free picnic party (bring your own snacks or purchase from the Pavilion Tearoom), complete with children's entertainer, a magician, bouncy castle and face painting. Children are invited to dress up in their best costumes – there will be a prize for the best fancy dress! The Teddy Bears' Picnic is free for members to attend and is included with general admission.

Summer Reading Challenge - Every Day from Wednesday 25 July to Sunday 2 September.

2018 marks the 80th anniversary of the iconic children's comic Beano. To celebrate, The Reading Agency's Summer Reading Challenge theme this year is Mischief Makers. The challenge encourages all children aged 4 to 12 years to borrow and read six books between 23 June and 22 September. There are free activities every day during the holidays. A daily story time at 11am and 2.45pm and our usual interactive Rat-a-Tat Tales will run on Saturdays, Sundays and Wednesdays.

Comic Character Masterclass - Thursday 26 July 2018 – 10.30am, 11.30am or 1pm

Join **WEAREBEARD**, a creative design agency based in Worcester, for a 45-minute masterclass in comic character creation. Create your very own character to take home with you. Add it to our book of Hive Comic Characters! For children aged 6-12 - check website when booking for age suitability.

Cost £3.50 per child. Booking is essential.

Mischief Making Sessions - Every Monday and Thursday from 23 July to 27 August Sessions on the hour at 10am, 11am, 12pm and 1pm.

Join us throughout the summer for a bit of mischief. Will you get to grips with Minecraft and wreak havoc in our online version of Worcester, make a Dennis or Gnasher mask to take home with you, create a comic book game in computer code or create your own comic character to add to our Giant Hive Comic Book. Activities are free or £2.50 per child for craft make and take.

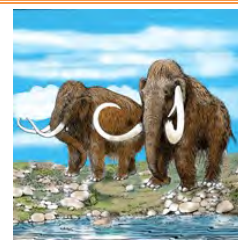
Monday 23 July and Monday 20 August - Pop Up Pranks - Trick your family with a cheeky Gnasher Jack in the Box

Monday 30 July & Thursday 2 August - Cartoon Faces - Make a wall plaque of your favorite Beano characters 5 yrs +.

Monday 6 & Thursday 9 August - SRC Comic Strip Creation - Write and design your own comic story to take away. For children aged 7 and over.

Monday 13 & Thursday 16 August - Beano Wars Coding - Code your own mischief game – will you turn Dennis into Gnasher or make them both vanish?

EEK! A giant Ice Age Batik! Tuesday 31 July, 11am to 3pm. Join Sarah Jones from **Eekbatik** to design and produce a GIANT Ice Age geology batik for our exhibition. You will learn the traditional art of Indonesian Batik – working with wax and the most wonderful colour dyes. Alongside this will be a workshop exploring how our Ice Age ancestors expressed themselves through art. Come and create your own cave art at these drop-in sessions. Suitable for children aged 7 and above.



The End of the Ice Age? Monday 13 August, Tuesday 14 August and Wednesday 15 August

2018. Keep cool at the Hive this August with Bristol based artists Megan Clark-Bagnall & Jasmine Loveys. Between them, their skills include performance, visual art, hosting excellent parties and disco dancing. A small group of young artists are invited to participate in a series of art workshops. This is an exciting opportunity to explore a variety of art techniques and undertake new experiments! There will be a BIG MAKE activity as well as individual makes for your children to treasure and take home! Each day we will add another element towards our big make creating a slightly scientific, large in size and experimental multimedia installation reflecting our place in the world. Expect lots of frozen water, sound, lighting and a chance to use technology in new ways!

DAY ONE: Explore Your Place In The World What better way to capture some images of the world around us than by making our very own pinhole cameras out of everyday objects. Embrace unique perspective looking at the world differently!

DAY TWO: Treasures On Earth. Let us step outside together, explore the earth, its offerings and together we will create some treasured trinkets from nature's bounty to take home!

DAY THREE: Welcome To The End Of The Ice Age. We are going to end these workshops by throwing a welcome party! Together we will curate an ice cracking finale art exhibition and preview your artworks to parents!



Worcester TheatreMakers: Come and make Theatre with us!

Daily, 6 Aug – 10 Aug 10-3pm
Theatre-Tastic at the Hive
A week of theatre fun in the holidays
with all of the usual Worcester
Theatremakers energy.



Monday - The Magic of Mime Day The first day of our TheatreTastic week at The Hive. Channel your inner Marcel Marceau; create your own mime face and character. Play many drama games and have some fun!

Tuesday - Incredible Improv-Play your favourite improv games, learn how to make great theatre spontaneously; improve confidence and laugh - a lot!

Wednesday - Mask-Mask theatre has a huge history. We will be making our own masks, getting to know them, and creating some mask theatre of our own.

Thursday - Find your voice-A day when you are allowed to be noisy - with control! Explore the power of your voice, and use it. Lots of drama games and fun too.

Friday - Devise a play Use all our drama skills to devise a piece of theatre in a day, write the story, rehearse it, and show it! £20 per day or £80 for the whole week. Book your place ASAP, only 20 per day available.

www.worcestertheatremakers.co.uk; email worcestertheatremakers@gmail.com

Beth Walsh 01905 767332; Mob 07817 009158 | Bev Bevan 01905 428355; Mob 07419 772826

UNIQUE YOGA & AERIAL FITNESS

A FUN WAY TO EXERCISE FOR YOUNG PEOPLE AGED 5 TO 25 YEARS
WITH AND WITHOUT DISABILITIES AND/OR SENSORY IMPAIRMENT

This new two-year programme kick-starts with four days of outdoor classes -

August 21st - 24th at the Fold, Bransford

11.00 – 12.00 5 – 11 yrs

12.30 – 13.30 12 – 16 yrs

14.00 – 16.00 17 – 25 yrs

£15 total for four sessions

BOOKING ESSENTIAL



EVERY
BODY
DANCE

EVERYBODY DANCE
rfeverybodydance@gmail.com
07870429528
www.everybodydance.org.uk

Unique Yoga & Aerial
Fitness is Supported by





Kids Run Free community running events make great use of our public green spaces to encourage this natural movement and inspire a lifelong love of physical activity.

Kids Run Free passionately believes that physical activity can unlock the potential in all children, making them happier, healthier and more confident for life.

Our Worcester event is on the 1st Saturday of every month.

Perdiswell Leisure Centre, Bilford Rd, Worcester WR3 8DX

Please arrive for 9:45am for warm ups/registration and the running starts at 10:00am for an hour. Attendance is free and for more information, please go to www.kidsrunfree.co.uk

Redditch Judo Kwai

Cookhill Village Hall, Redditch/Alcester

Tuesday, Juniors 19:30pm - 20:30pm £3.50 mat fee per session

Friday, Juniors 17:30pm - 19:00pm £3.50 mat fee per session

St Johns Middle School, Bromsgrove

Juniors 18:30pm -19:30pm £3.50 mat fee per session



Please check the website for full details <http://redditchjudokwai.co.uk/>

If you are interested in taking part and want to come and have a go at JUDO, then please contact either Claire or Oliver

YOUR FIRST SESSION IS FREE

DONT HESITATE TO GET IN TOUCH!

Email: Redditchjudokwai@gmail.com

Phone: 07983 408 473



**National
Trust**

Summer Fun at The Firs



Plays and Tales

21 July to 15 Aug 10:30am-4:30pm

The Firs will help you weave your own Plays and Tales as you explore, using this beautiful setting as your backdrop take a step back in time with your family and friends and bring out your theatrical side. Discover some props and scripts along the way to inspire you. Free event - normal admission applies

Puppet Play Craft

21 July - 15 Aug 10:30am-4:30pm

As well as performing in many ways with our Plays and Tales event, you can even make your very own hand puppet with our craft kit. You can use it here at The Firs and take it home to create your own stories with.

£1.50 - normal admission applies

Fairytale Friday

27 July, 3 Aug, 10 Aug 11:15am, 12:15pm and 1:15pm

Join us in our summerhouse in the beautiful cottage garden to hear tales of heroes, villains, goblins and ghouls.

Free event - normal admission applies

Music Makers

16 Aug - 3 Sept 10:30am-4:30pm

Explore The Firs to help us put our musical instruments back together to fill the air with music. Around The Firs we have broken instruments which we need fixing. Can you help to bring music to the air?

Buy an instrument kit for **£2.50** to make your own instrument to take home.

Free event - normal admission applies Craft £2.50

Call 01905 333 330 for details
nationaltrust.org.uk/the-firs

When you visit, donate, volunteer or join the National Trust, your support helps us to look after special places for ever, for everyone.



DEFENCE LAB

Summer Special Offer – FREE Martial Arts Training,
with NO JOINING FEE for CU Passport Holders!!



Defence Lab are offering 1 month of Free Martial Arts classes at our centres in Kidderminster, Droitwich and Bromsgrove, with a further special offer of No Joining Fee for CU Passport holders who wish to continue their training after their free period is completed.

Defence Lab's "DL Kids" programme is an amazing solution for building children's confidence, friendship, fitness and teamwork, all whilst learning practical and functional self-defence skills in a fun, child friendly, ethical and moral environment.

Classes take place throughout the week at:

Defence Lab Kidderminster
The Old Laboratory
Paddington House
New Road
Kidderminster
DY10 1AL

Aston Fields Middle School
Drummond Road
Bromsgrove
B60 2ET

St. Peter's First School
St. Peter's Church Lane
Droitwich
WR9 7AN

St. John's Middle School
Watt Close
Bromsgrove
B61 7DH



You can see a full timetable of classes, and book your first free session at
www.selfdefencekidderminster.com/timetable.

Just remember to bring your CU Passport with you to your first class to take advantage of this awesome special offer.

A Breath of Fresh Air
LEARN - DISCOVER - EXPLORE



in partnership with



Forestry Commission
England

Get Wild! this Summer

@ WYRE FOREST, DY14 9XQ



Having Fun! @ Wyre Forest -
Summer 2018

GO WILD

DROP OFF SESSIONS FOR THE
OVER 5'S. WEDNESDAYS
THROUGHOUT AUGUST.
10AM-3PM. £20

FOREST EXPLORERS

DROP OFF SESSIONS FOR
THE OVER 8'S. THURSDAYS
THROUGHOUT AUGUST.
10AM-3PM. £20

FAMILY FOREST PLAY

FAMILY SESSION. FRIDAYS
10-11.30 AM. £5 PER
CHILD SIBLINGS £3.50

ALL SESSIONS INCLUDE: CAMPFIRE SNACK, DEN
BUILDING, MUDDY PLAY, EXPLORING NATURE AND
MORE!

BOOKING ESSENTIAL

WWW.ABREATHOFFRESHAIR.EDUCATION

07970972271

Medieval Revelry

AT THE COMMANDERY

THE
COMMANDERY

WORCESTER

Civil War Battle HQ & Historic Building

SUNDAY 26TH – MONDAY 27TH
AUGUST – 10AM – 5PM

ENJOY JOYFUL MEDIEVAL CELEBRATIONS, FROM TERRIFIC TOURNAMENT GAMES TO TRADITIONAL CRAFTS. MIX WITH MEDIEVAL ARCHERS, NOBILITY, KNIGHTS, TRAVELLERS AND TRADERS. BE GREETED BY THE GOOD FOLK OF THE COMMANDERY IN A BEAUTIFUL HISTORIC BUILDING THAT ONCE HOUSED MEDIEVAL MONKS AND MIRACLES.

In partnership with Amicorum Living History.

FANTASTIC FAMILY FUN

MARVELLOUS MIDDLE AGES

Tuesdays – Fridays: 31st July – 24th August - 11am and 2pm

Join us as we travel back to the Marvellous Middle Ages and find out what life was like in medieval times. Become a monk, practise your illuminated lettering, go to Squire School or see if you can prevent the plague!

THROUGHOUT THE SUMMER...

WORCESTER'S CIVIL WAR STORY

Master tactical techniques, uncover stories of treachery and tragedy and come face-to-face with Oliver Cromwell in The Commandery's interactive experience.

EXPLORER BACKPACKS

Step into the shoes of an English Civil War soldier or a Victorian Explorer for the day and solve puzzles and challenges.*

*Family activities cost £3 to cover materials



PRICES

Adults £5.95 (£4.95*) Children go FREE

Worcester Residents Annual Pass £5**

*Concession & Student (17+) prices

**Please bring your Council Tax bill as proof of residency

OPENING TIMES

Tuesday – Saturday: 10am – 5pm

Sunday: 1.30pm – 5pm

The Commandery, Sidbury,
Worcester. WR1 2HU. 01905 361821

The Commandery

@worcestermuseum

museumsworcestershire

For more information visit
www.museumsworcestershire.org.uk

Museums Worcestershire is a partnership between Worcester City
and Worcestershire County Councils

MUSEUMS 
WORCESTERSHIRE
Art • Heritage • Events



ROCK MONKEY

SUMMER CLUB

LET YOUR CHILD'S INNER 'CHEEKY
MONKEY' SHINE THROUGH AT
OUR MONKEY SUMMER
HOLIDAYS KIDS CLUB!

MULTI ACTIVITY DAY HERE AT REDPOINT WORCESTER.
DROP YOUR LITTLE MONKEY (OR LARGER MONKEY) OFF
WITH US FOR THE DAY*. LUNCH CAN ALSO BE PURCHASED
FROM OUR ON-SITE CAFE!
WE ALSO HAVE FREE WIFI AND A LARGE CAR PARK FOR
THOSE USING OUR FACILITIES.

24TH JULY TO 30TH AUGUST
£40.00 PER SESSION | (AGES 7 - 17)
£25.00 ADDITIONAL SIBLINGS DISCOUNT
WEEKDAYS* FROM 10:00 - 15:00**

PRE-BOOKING REQUIRED. *1000 - 1500 TUESDAYS, WEDNESDAYS &
THURSDAYS. ** SCHEDULED BREAK TIMES INCLUDED.



REDPOINT WORCESTER, THE OLD RAILWAY YARD, MIDLAND ROAD, WORCESTER, WR5 1DS
FOR MORE INFORMATION  INFO@REDPOINTWORCESTER.CO.UK  01905 350346
 /REDPOINTWORCESTER  @REDPOINTWORCS  @REDPOINTWORCESTER



Redpoint
climbing centre
WORCESTER

Worcestershire

1st Crowle Scouts
1st Fladbury Rainbows and Brownies
1st Pinvin Guides
1st St Peters Guides
6th Worcester Cubs
Abbey Sports Centre
All Things Wild Nature Centre
All Starz Gymnastics
All Worcestershire Libraries
Aspire Sports
Aztec Adventure
Aztec Water Sports
Beoley Equestrian Centre
Birmingham and Solihull Rugby Club
Boys 2 Men
Bromsgrove Gymnastics Club
Broom Swim School
Cobras Tae Kwon Do
Contour Outdoor
Cotswold Farm Park
Croome Park
*Dance Challenge
*Defence Lab
Droitwich Spa Leisure Centre
EnviroSort
Everybody Dance
Evesham Leisure Centre
Football Fun Camps
*Footie Bugs
Forestry Commission –
Wyre Forest
Green Frog Pottery
Hartlebury Castle
Honeybourne Pottery
How to Cook
Jamboree Drum Tuition
*JUMP Dance Academy
*Kids Run Free
Kip McGrath Bromsgrove
Lowerwick Swimming Pool
*Master Griffiths Karate
Museum of Royal Worcester
Oaklands Outdoor Activity Centre

Paul Devlin Football Coaching
Persnore Leisure Centre
Persnore Rugby Club
Pioneer Centre
Pyjama Drama
Redditch Borough Council –
Walking trail
Redditch Judo Kwai
Redpoint Climbing Centre
Rhythmic Gymnastics Club, Worcester
Riverside Ballet
Science Hunters
Spetchley Park Gardens
*Sports Challenge
Studley & Redditch Tigers –
Tae Kwon Do
Sudeley Castle & Gardens
The ATE Trust
The Commandery
The Creation Station
The Elgar Museum
The Infirmary
The Vale Golf Club
The World Outside Forest School
Top Barn Activity Centre/University of
Worcester Lakeside Campus
Vertical Limit Indoor Climbing
WadoKai Worcester Karate
West Midlands Safari Park
White Lotus Martial Arts
*WIP My Style Club
Worcester Cathedral
Worcester City Art Gallery & Museum
Worcester Warriors RFC
Worcester Youth Theatre Makers
Worcestershire Cricket
*Worcestershire Martial Arts

Shropshire

House on Crutches Museum

* Please visit www.childrensuniversity.co.uk for locations/venue information.

Worcestershire Children's University Summer Challenges

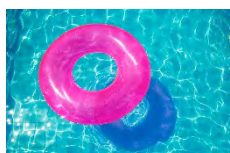


Discover a new town or city by downloading a [Huntfun/Treasure Trails/Curious About](#) trail from the internet.

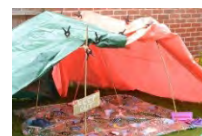
Tired of blowing up balloons? Construct a fizz inflator and you will not have to! You will need an empty plastic bottle, vinegar, a small balloon, some bicarbonate of soda and some paper. Take some pictures and explain how your fizz inflator works! Your instructions: sciencebob.com/build-a-fizz-inflator

Plan your very own crazy sports day for your friends/siblings – this is like a normal sports day but with crazier games! Choose three silly games like football golf, a walking race, or a dance off. Nominate a referee, write down your rules, and keep a leader board!

Go for a swim at your nearest pool and play a game of Marco Polo. Write down the rules of the game so others can play it too.



If you travel somewhere on holiday (at home or abroad) this summer, keep a holiday diary and write down something new and exciting that you learned each day.



Build a den in your garden or your nearest park using some cloth, large sticks, and some rope.

Read 3 books or comics about super heroes or super villains.



Write a short review for each, giving your official star rating. Why not design your very own super hero costume? What would your super power be and why? Would you use your powers for good or evil?

Make your very own colourful crystals inside an eggshell. You will need eggs, water, cups, spoons, food colouring and a mix of solid powers like salt, sugar, bicarbonate of soda and cream of tartar. Take some pictures, and write down how the experiment works! Your instructions: www.sciencebob.com/eggshell-geode-crystals

Make and practice a full dance routine to your favourite song with your friends and perform it for your family.



Head to the 'Into Film: Must see Movies before you grow up' website:

www.intofilm.org/msm.

Pick a category and watch one of the movies listed under your chosen category. Download one of the FREE Must see Movies activity sheets from the same category and complete the activities.

What is a habitat? In your garden or local park, find as many different habitats as you can, and draw or take a picture of the animals you can find that live there. Up a tree? In a pond? Under a rock? Under the ground? Along with your pictures, tell us *why* you think the animal has made this habitat their home.



Make a delicious summer lunch for your family. Take pictures of the feast and write the recipe down to make your very own mini recipe book. *Ideas and healthy recipes:* www.eatsamazing.co.uk and www.bbcgoodfood.com



August is Kindness month. Take part in and write about 3 random acts of kindness before the end of august, you could help younger siblings with reading, writing or numbers; make a card for a friend or family member to say thank you; bake something for a charity bake sale or take part in a sponsored event for a charity.



Visit your local library and pick a Horrible Histories book. What are three gruesome or silly facts about the period of history the book talks about? Tell us what you would like about living in that time, and what you would not like at all!

Visit your local library and pick a Horrible Histories book.

In your garden or local park, find some stones about the size of the palm of your hand and decorate them to look like fossils. Do some research about the fossils you choose –will you paint an ammonite? A trilobite? When did these animals live?



Worcestershire Children's University Challenge Evaluation form

Activity Title: _____

Completed on ____/____/____ by _____ with help from _____

Where did you complete the activity (location) _____

What materials / resources did you use?

What did you learn?

Tell us how you completed the activity...

What did you like about the activity?

What skills did you use?